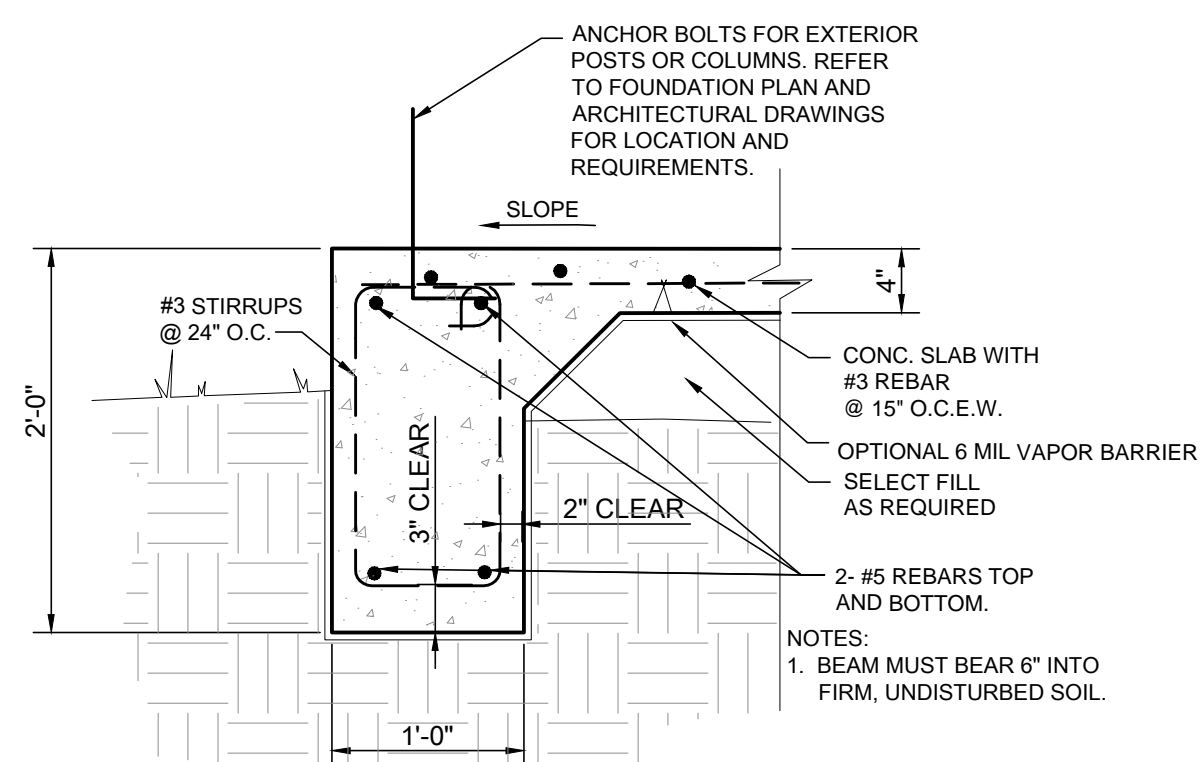
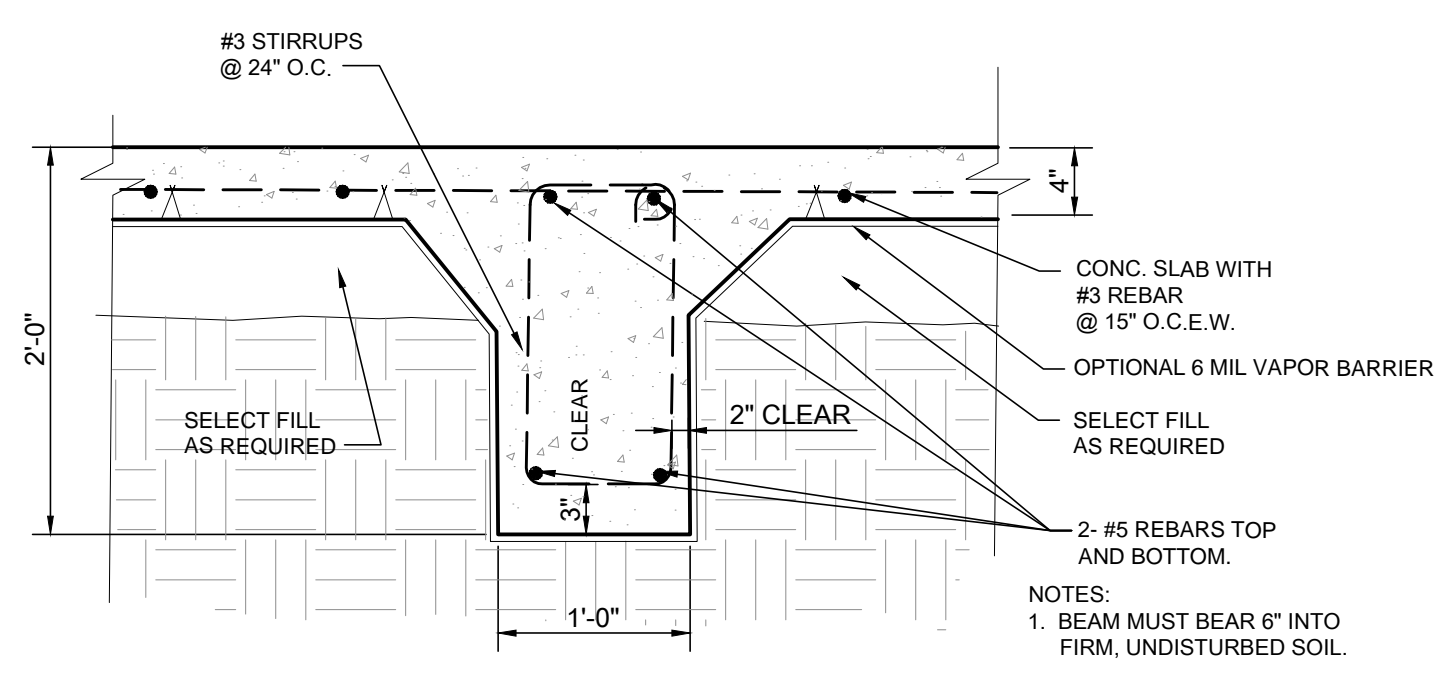


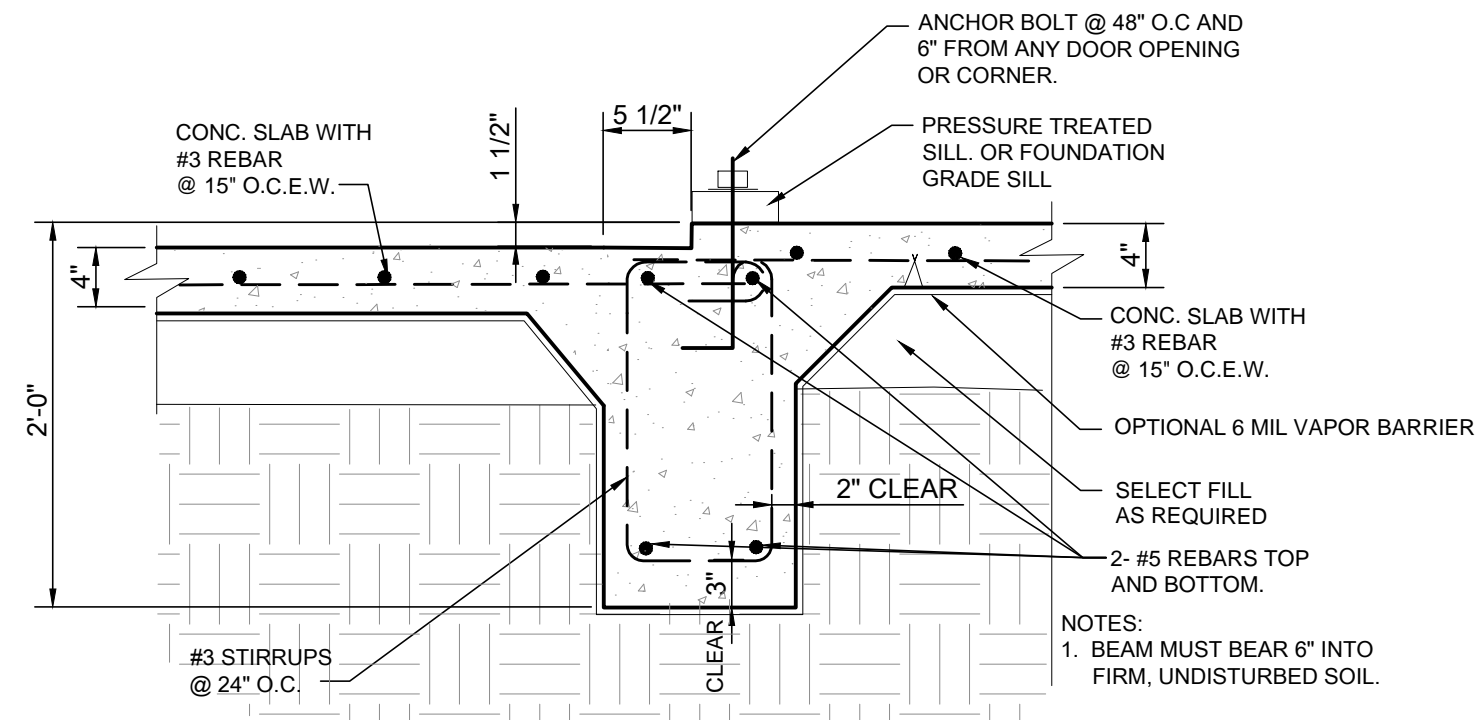
2
SECTION
S2.0 TYPICAL EXTERIOR BEAM



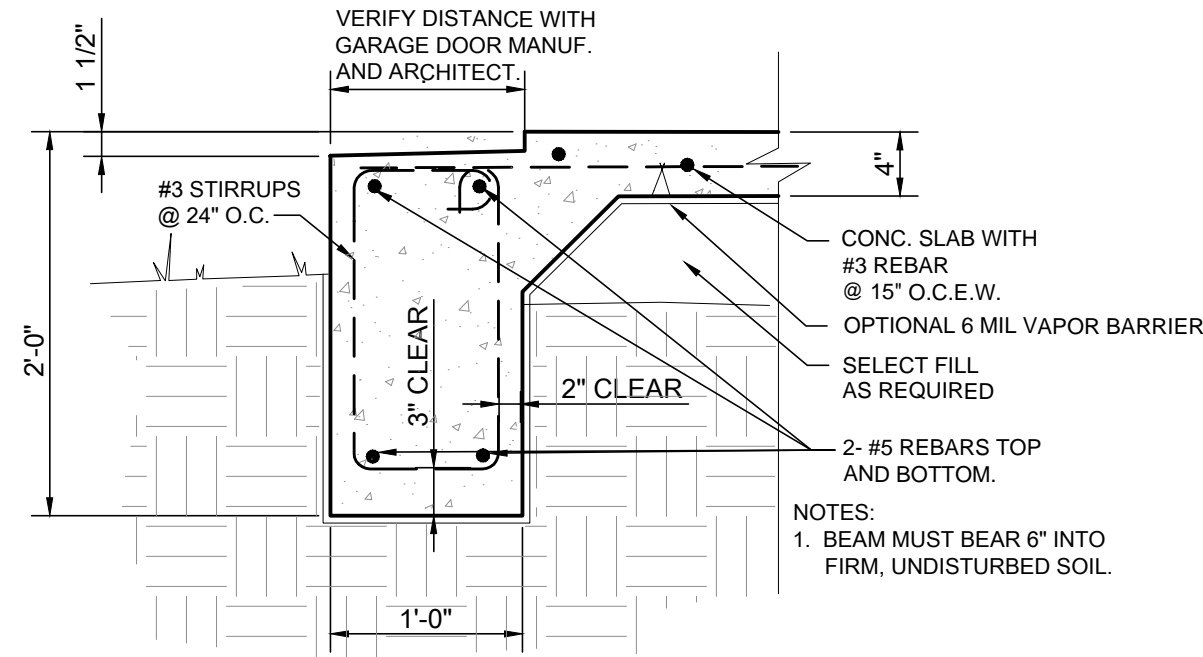
3
SECTION
S2.0 TYPICAL EXTERIOR PORCH LOCATIONS



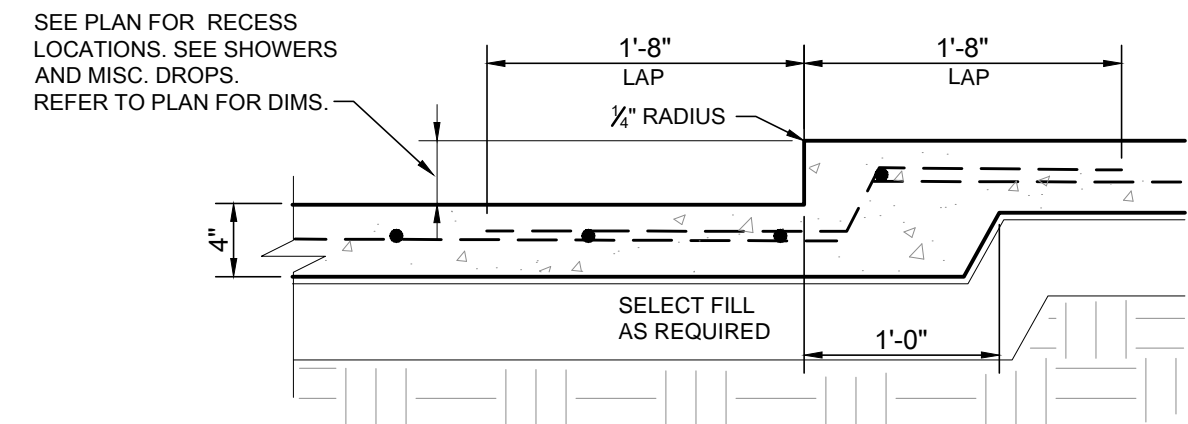
4
SECTION
S2.0 TYPICAL INTERIOR BEAM



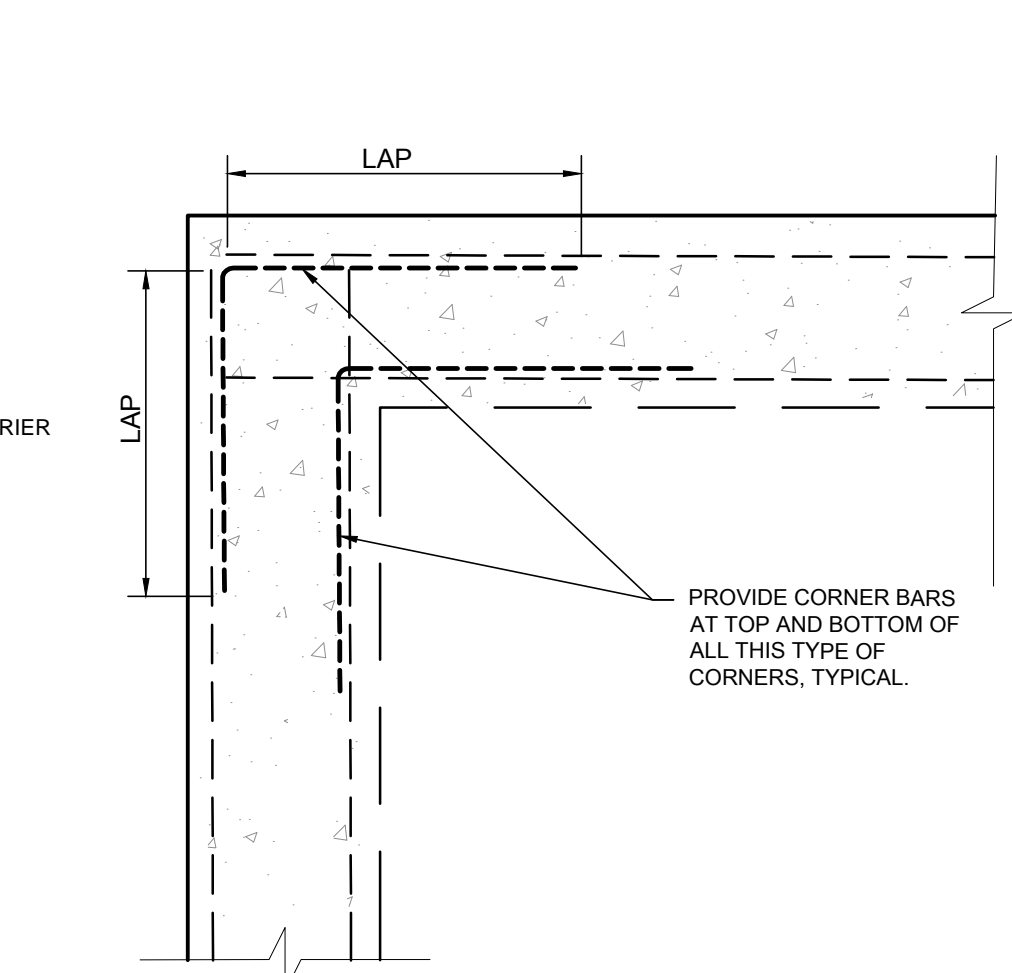
5
SECTION
S2.0 TYPICAL EXTERIOR BEAM AT PORCHES



6
SECTION
S2.0 TYPICAL BEAM AT DOOR OPENINGS



7
SECTION
S2.0 TYPICAL DROP NOT AT BEAMS



8
TYPICAL BEAM INTERSECTIONS

FOUNDATION NOTES

- THIS FOUNDATION HAS BEEN DESIGNED IN ACCORDANCE WITH THE FOLLOWING:
 - AMERICAN CONCRETE INSTITUTE: "BUILDING CODE REQUIREMENTS FOR REINFORCED CONCRETE."
 - B.R.A.B. REPORT - CRITERIA FOR SELECTION AND DESIGN OF RESIDENTIAL SLABS-ON-GRADE.
 - ALLOWABLE BEARING CAPACITY 1,500 P.S.F.
- DESIGN LOADS - 2012 I.R.C.
 ROOF (LIVE LOAD) 20 PSF
 WIND (LATERAL) 15 PSF
 WIND (UPLIFT) 12 PSF
 FLOOR (LIVE LOAD) 40 PSF AND PER BUILDING USE
- ALL CONCRETE AND REINFORCEMENT SHALL BE PLACED IN ACCORDANCE WITH "ACI 318 - BUILDING CODE REQUIREMENTS FOR STRUCTURAL CONCRETE."
 - ALL CONCRETE SHALL BE OF A DESIGN MIX TO HAVE A 28-DAY COMPRESSIVE STRENGTH OF 3,000 PSI.
 - REINFORCING STEEL SHALL CONFORM TO ASTM A-615 GRADE 60.
 - LAP SPLICES SHALL BE 15" FOR #3s, 20" FOR #4s, 25" FOR #5s AND 30" FOR #6 REINFORCING BARS.
 - PROVIDE 6 MIL POLYETHYLENE VAPOR BARRIER BENEATH ALL SLABS AND BEAMS.
 - EXPOSED SURFACES OF GRADE BEAMS SHALL BE RUBBED WITHIN 24 HOURS OF PLACEMENT.
 - CONTRACTOR SHALL COORDINATE FOUNDATION DRAWINGS WITH ARCHITECTURAL AND MEP DRAWINGS.

DESCRIPTION	DATE	BY	REV	DESIGNED	DRAWN	CHECKED	APPROVED	DATE
RELEASED FOR CONSTRUCTION	5/19/2022	CDR	0	CDR	BFT	CDR	CDR	5/2022

Rosenbaum Engineering, PLLC
 325.669.2915
 2326 Wyndham Ct.
 Abilene, Texas 79606
 Clint Rosenbaum, P.E. | clint@rosenbaumeng.com

05/19/2022

Foundation & Details
Boedecker House
Hidden Shores
Cisco, Texas